



**IT Exam World .com**

**The Top Certification Site**    **OVER 1000 EXAMS FROM ALL VENDORS**

- Verified Answers and Explanations
- Printable questions and answers
- Update per 15-20 Days
- Instant Download
- Security Multi Order
- 24\*7 Support
- Pass on Your First Try Guarantee

**interactive Exams**  
Self Exam Engine

**Questions & Answers**  
With Explanations

**Study Guides**

**Preparation Labs**

**Audio Exams**

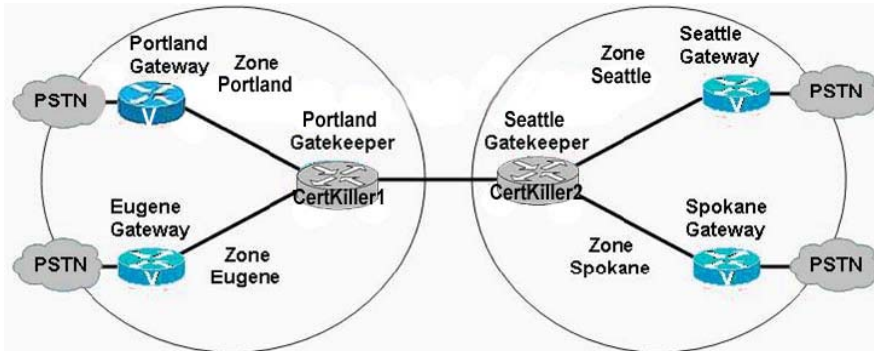
**Exam : 642-481**  
**Cisco Rich Media Communications**

### **Demo Version**

To Access Full Version, Please go to  
[www.itexamworld.com](http://www.itexamworld.com)

**QUESTION 1:**

Exhibit:



The network has two gatekeepers that control four zones. Which command is used to ensure that the aggregate bandwidth between zones that are controlled by the Portland Gatekeeper and the Seattle Gatekeeper is limited to 100,000 kbps?

- A. bandwidth interzone 166667
- B. bandwidth remote 166667
- C. bandwidth session 166667
- D. bandwidth region 166667
- E. bandwidth zone 166667

Answer: B

**QUESTION 2:**

Itexamworld .com has a single Cisco IPVC 3511 MCU E. At present there are two conferences occurring as follows:

Conference 1: three conference participants rating 768 kbps to 384 kbps enhanced continuous presence

Conference 2: three conference participants rating 768 kbps to 384 kbps multiple conference view (3) A third conference is desired with the following requirements:

Conference 3: three conference participants

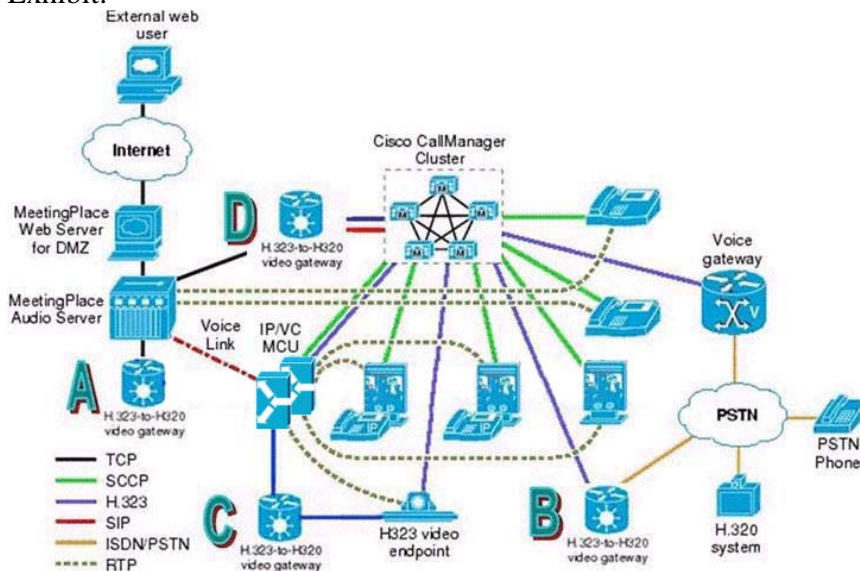
What will occur when the third conference is attempted?

- A. The third conference will succeed as desired.
- B. The third conference will succeed, but without the enhanced continuous presence.
- C. The third conference will fail because an IPVC 3511 MCU does not have the resources for three conferences of three people each.
- D. The third conference will fail because the EMP module does not have the resources to provide the number of required services.

Answer: A

**QUESTION 3:**

Exhibit:



Itexamworld.com is using Cisco meeting place at its world headquarters; Itexamworld.com also has a Cisco CallManager cluster. The Cisco CallManager cluster includes a video deployment with both SCCP and H.323 video endpoints. The videoconferencing capability is provided by a Cisco IPVC 3540 Series Videoconferencing System. Using the topology in the exhibit, what should be the video gateway location?

- A. A
- B. B
- C. C
- D. D

Answer: B

**QUESTION 4:**

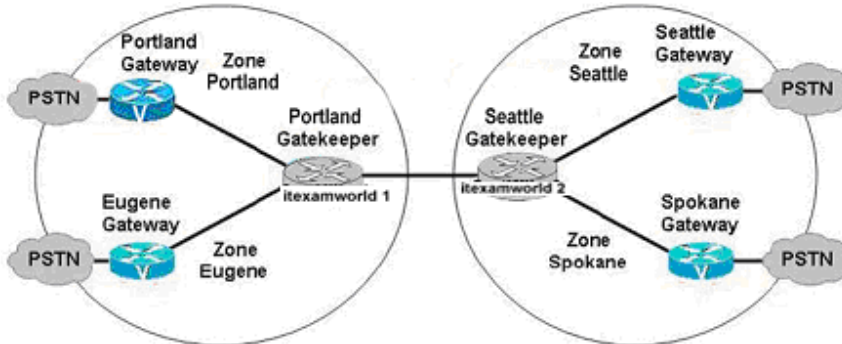
Itexamworld .com is deploying Cisco VT Advantage to enable executives to participate in video calls with customers and suppliers. Which two devices can be used to allow these external calls to be placed over a dedicated PRI? (Choose two.)

- A. Cisco IPVC 3521
- B. Cisco IPVC 3526
- C. Cisco IPVC 3540
- D. Cisco Multiservice IP-to-IP Gateway
- E. Cisco MCM proxy

Answer: B,C

**QUESTION 5:**

Exhibit:



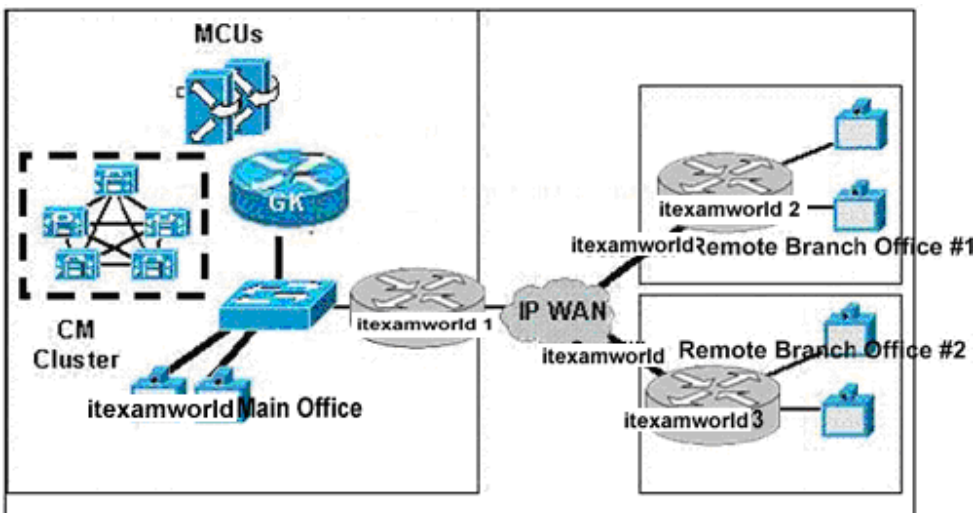
A network has two gatekeepers that control four zones. Which command is used to ensure that the aggregate bandwidth between the Seattle and Spokane zones is limited to 100,000 kbps?

- A. bandwidth interzone 166667
- B. bandwidth remote 166667
- C. bandwidth session 166667
- D. bandwidth region 166667
- E. bandwidth zone 166667

Answer: A

**QUESTION 6:**

Exhibit:



CAC is being configured for the centralized call-processing video telephony network. Each video terminal is capable of a maximum data rate of 320 kbps, and two video terminals are planned for each site. The requirement is to make two simultaneous video calls between the Itexamworld main office and each remote Itexamworld branch office site. The

**642-481**

audio codec will be G.711. In order to ensure quality of service for calls, which action should be taken when configuring Cisco CallManager?

- A. Set the location video call bandwidth between the central site and each remote site to 922 kbps.
- B. Set the location video call bandwidth between the central site and each remote site to 384 kbps.
- C. Set the location video call bandwidth between the central site and each remote site to 768 kbps.
- D. Configure the gatekeeper to set the req-qos guaranteed-delay video bandwidth at 922 kbps between the central site and each remote site.
- E. Configure the gatekeeper to set the req-qos guaranteed-delay video bandwidth at 384 kbps between the central site and each remote site.
- F. Configure the gatekeeper to set the req-qos guaranteed-delay video bandwidth at 768 kbps between the central site and each remote site.

Answer: C

---

**Itexamworld.com**