



IT Exam World .com

The Top Certification Site **OVER 1000 EXAMS FROM ALL VENDORS**

- Verified Answers and Explanations
- Printable questions and answers
- Update per 15-20 Days
- Instant Download
- Security Multi Order
- 24*7 Support
- Pass on Your First Try Guarantee

interactive Exams
Self Exam Engine

Questions & Answers
With Explanations

Study Guides

Preparation Labs

Audio Exams

Exam Code: 350-030
CCIE Voice Written

Demo Version

To Access Full Version , Please go to
www.itexamworld.com

QUESTION 1

When using an Inline-Power enabled Catalyst Switch, which pins are used to supply Inline-Power to an IP Phone?

- A. Pins 1, 2, 3, and 6
- B. Pins 1, 2, 5, and 6
- C. Pins 2, 4, 6, and 8
- D. Pins 3, 4, 7, and 8
- E. Pins 4, 5, 7, and 8

Answer: A

CISCO CATALYST 4000 SERIES SWITCHES, Cisco Catalyst 4000 Series Inline Power Solution

http://www.cisco.com/en/US/products/hw/switches/ps663/products_data_sheet09186a00800924d0.html

QUESTION 2

When using a Cisco Inline-Power Patch-Panel, which pins are used to supply Inline-Power to the IP Phone?

- A. Pins 1, 2, 3, and 6
- B. Pins 1, 2, 5, and 6
- C. Pins 2, 4, 6, and 8
- D. Pins 3, 4, 7, and 8
- E. Pins 4, 5, 7, and 8

Answer: E

CISCO NETWORK MODULES, Catalyst Inline Power Patch Panel

http://www.cisco.com/en/US/products/hw/modules/ps2797/products_data_sheet09186a00800a9ea3.html

QUESTION 3

You are a network administrator at Itexamworld . Your newly appointed Itexamworld trainee wants to know what protocol IP Phone uses to learn the Voice VLAN ID it should use for Voice traffic.

What will your reply be?

- A. Skinny Station Protocol
- B. 802.1q
- C. LLQ
- D. VTP
- E. CDP

Answer: E

QUESTION 4

You are the network administrator at Itexamworld . Your newly appointed Itexamworld trainee wants to know what MailStore options are supported in Unity version 2.4.6.

What will your reply be?

- A. MS Mail
- B. Domino
- C. Exchange 2000
- D. Exchange 5.5
- E. None of the above

Answer: D

http://www.cisco.com/en/US/products/sw/voicesw/ps2237/prod_pre_installation_guide09186a00800ea54b.h

QUESTION 5

You are a network administrator at Itexamworld . Itexamworld has a Unity3.0/ and Exchange 2000 system. Which of the following attributes will be stored in Active Directory? (Choose three.)

- A. Transfer Type (Supervised, Release to switch)
- B. Location ID
- C. Alternate Extensions
- D. Recorded Name
- E. All of the above

Answer: B, C, D

QUESTION 6

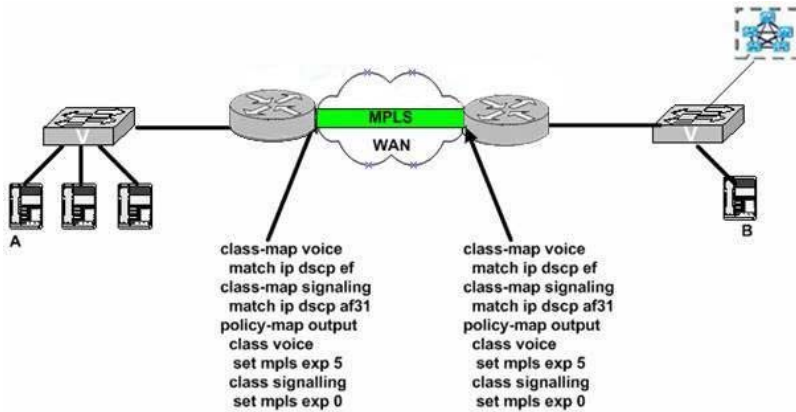
You are a network administrator at Itexamworld . Your newly appointed Itexamworld trainee wants to know what Network Management Server (NMS) application she can use to monitor Voice quality by polling the SNMP MIB for MQC. What will your reply be?

- A. Voice Health Monitor
- B. Quality of Service Policy Manager
- C. Internetwork Performance Monitor
- D. Resource Manager Essentials
- E. None of the above

Answer: C

QUESTION 7

You are the network administrator at Itexamworld . The Itexamworld network and the complete MPLS router QoS configuration is shown in the following exhibit:



The LAN switches (and any other equipment in the cloud) do not mark or remark the packets.

With regard to the QoS configuration in the exhibit, when IP Phone A calls IP Phone B, how will the voice and signalling packets be marked by the time they arrive at IP Phone B?

- A. Voice: IP Precedence 5; Signaling 3
- B. Voice: DSCP AF ; Signaling : DSCP EF31
- C. Voice: IP Precedence 5; Signaling 3: 0
- D. Voice: DSCP EF; Signaling : DSCP EF31
- E. Voice: DSCP EF; Signaling : 0

Answer: D

The DSCP field remains unchanged in the entire process

QUESTION 8

You are a network administrator at Itexamworld . Your newly appointed Itexamworld trainee wants to know what protocol an IP Phone uses to learn the IP Address of its TFTP Server.

What will your reply be?

- A. CDP
- B. OSPF
- C. HSRP
- D. EIGRP
- E. DHCP

Answer: E

QUESTION 9

With regard to jitter, which of the following statements are true?

A. Jitter is the variation from the time that a packet is expected to be received and when it is actually received.

Voice devices have to compensate for jitter by setting up a playout buffer to accept voice

in a smooth fashion and avoid discontinuity in the voice stream.

B. Jitter is the actual delay from the time that a packet is expected to be transmitted and when it actually is transmitted.

Voice devices have to compensate for jitter by setting up a playin buffer to play back voice in a smooth fashion and avoid discontinuity in the voice stream.

C. Jitter is the actual delay from the time that a packet is expected to be transmitted and when it actually is transmitted.

Voice devices have to compensate for jitter by setting up a playout buffer to play back voice in a smooth fashion and avoid discontinuity in the voice stream.

D. Jitter is the variation from the time that a packet is expected to be received and when it is actually received.

Voice devices have to compensate for jitter by setting up a playin buffer to accept voice in a smooth fashion and avoid discontinuity in the voice stream.

Answer: A

QUESTION 10

You are a network administrator at Itexamworld . Your newly appointed Itexamworld trainee wants to know what the differences between Type of Service (ToS) and Class of Service (CoS) are.

What will your reply be? (Choose two.)

A. CoS allows a class based access to the media, but ToS prioritizes this access according to the precedence bit.

B. CoS is a field in the IP header, but ToS is evaluated by the routing protocol.

C. CoS is a Layer 2 mechanism, but ToS is a Layer 3 mechanism.

Answer: A, C

CoS Layer 2

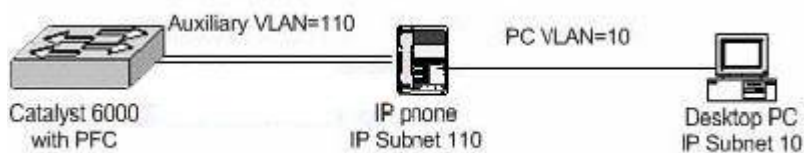
<http://www.cisco.com/univercd/cc/td/doc/product/software/ios120/120newft/120limit/120s/120s28/12swred.htm>

ToS Layer 3

http://www.cisco.com/en/US/products/hw/switches/ps672/products_qanda_item09186a00800a8922.shtml

QUESTION 11

You are a network engineer at Itexamworld . The Itexamworld network is shown in the following exhibit:



You have just configured the Catalyst 6000 with the following commands:

set qos enable

set port qos 5/1-48 vlan-based

set port qos 5/1-48 trust-ext untrusted

set port qos 5/1-48 trust trust-cos

We assume that the IP Phone is connected to port 5/1, which of the following statements are true? (Choose three.)

- A. The IP Phone will re-write the CoS of 802.1p/Q-tagged packets from the PC to CoS=0.
- B. The IP phone will not modify the DSCP of packets from the PC.
- C. The Catalyst 6000 will not modify the CoS of any packets received on port 5/1.
- D. The Catalyst 6000 switch port 5/1 will re-write the CoS of all packets received on VLAN 110 with CoS=5.
- E. The Catalyst 6000 switch port 5/1 will re-write all packets with a Cos=0.

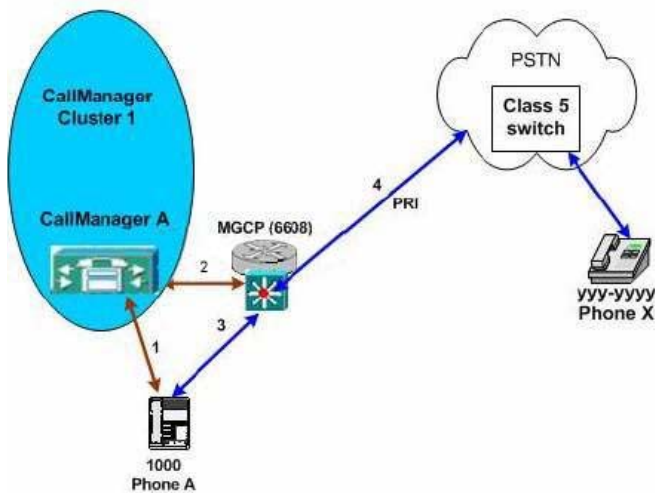
Answer: A, B, C

set port qos trust

http://www.cisco.com/univercd/cc/td/doc/product/lan/cat6000/sw_7_2/cmd_ref/set_po_r.htm#39814

QUESTION 12

You are the network administrator at Itexamworld . The Itexamworld network is shown in the following exhibit:



The default gateway in the Itexamworld network is a 6608 blade that is running MGCP. Call Manager runs version 3.1. Itexamworld users will make calls from Phone A to Phone X. All IP streaming is G.711. Each of the logical links in the Itexamworld network carries different types of traffic. On which link can q.921 traffic be sent?

- A. 1 only
- B. 2 and 3
- C. 2 and 4
- D. 3 and 4
- E. 4 only

Answer: E

QUESTION 13

You are a network administrator at Itexamworld . Your newly appointed Itexamworld trainee wants to know what the term "MGCP backhaul" means. What will your reply be?

- A. Transporting T1 CAS messaging to the MGCP Call Agent across IP.
- B. Transporting ISDN Q.931 messaging to the MGCP Call Agent across IP.
- C. Transporting ISDN Q.921 messaging to the MGCP Call Agent across IP.
- D. Transporting ISDN Q.931 messaging into MGCP events to the MGCP Call Agent.
- E. Encapsulating ISDN Q.931 CDR records to a RADIUS server.

Answer: B

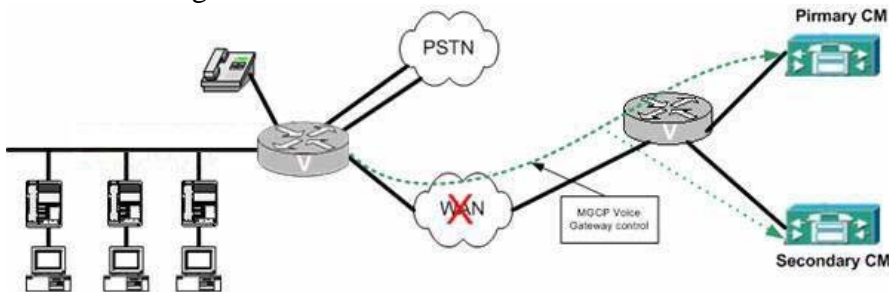
CISCO IOS SOFTWARE RELEASES 12.2 SPECIAL AND EARLY DEPLOYMENTS

MGCP-Controlled Backhaul of BRI Signaling in Conjunction with Cisco CallManager

http://www.cisco.com/en/US/products/sw/iosswrel/ps5012/products_feature_guide09186a00801a8bc4.html

QUESTION 14

You are the network administrator at Itexamworld . Itexamworld has a CM network deployed with MGCP to the branch office GWs. The Itexamworld network is shown in the following exhibit:



You want to protect the protect branch office telephony (IP phone to IP Phone, and IP Phone to PSTN) in the event of a WAN failure.

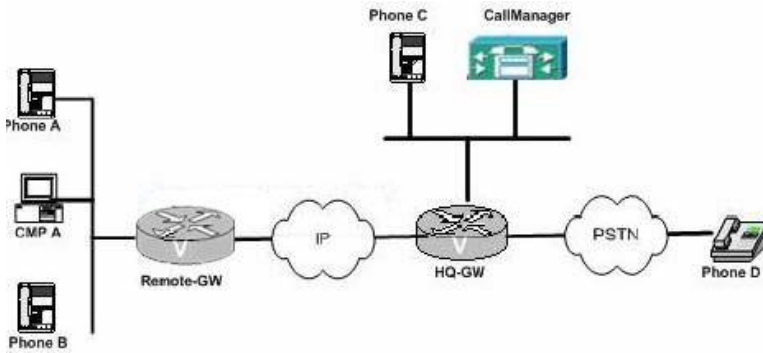
Which design methods could you implement? (Choose two.)

- A. SRST
- B. MGCP gateway fallback
- C. CM clustering
- D. Primary and Secondary CMs
- E. CAC

Answer: A, B

QUESTION 15

You are the network administrator at Itexamworld . The Itexamworld network is shown in the following exhibit:



A Iteexamworld user at PhoneA has finished a call. He later notice that "CM Fallback Service Operating" is displayed on Phone A.

What is the possible cause of this? (Choose two.)

- A. The TCP connection between CallManager and PhoneA has been disrupted.
- B. The FE on HQ-GW is out of service.
- C. The FXO port on Remote-GW is out of service.
- D. The FE on Remote-GW is out of service.
- E. Remote-GW has not received any messages from CallManager within the timeout period.

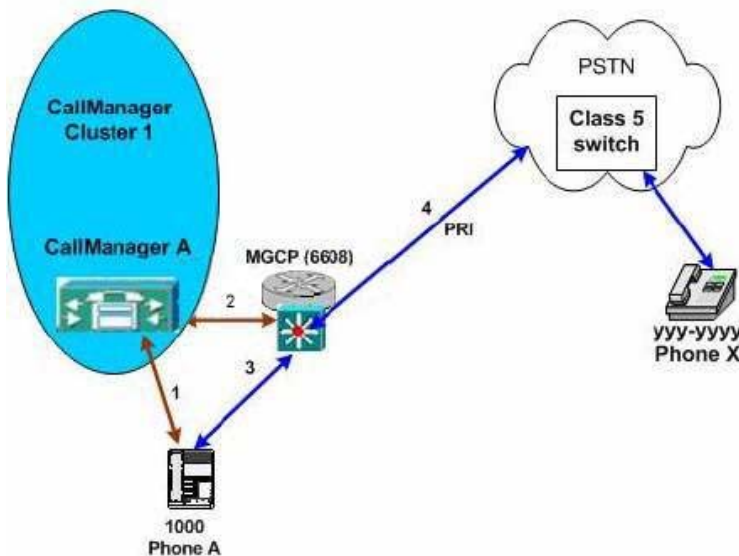
Answer: A, B

VOICE SOLUTIONS FOR BRANCH/SMALL OFFICE, Highly Available IP Communications White Paper

http://www.cisco.com/en/US/netsol/ns340/ns394/ns346/ns383/net_value_proposition09186a00801c6097.html

QUESTION 16

You are the network administrator at Iteexamworld . The Iteexamworld Voice network is shown in the following exhibit:



The default gateway in the Iteexamworld network is a 6608 blade that is running MGCP. Call Manager runs version 3.1. Iteexamworld users will make calls from Phone A to Phone X. All IP streaming is G.711. Each of the logical links in the Iteexamworld

network carries different types of traffic.
On which link can Skinny (SCCP) traffic be seen?

- A. 1 only
- B. 1 and 2
- C. 1, 3, and 4
- D. 2, and 3
- E. 2, 3, and 4

Answer: A
Skinny is only used between CCM and IP phone

QUESTION 17

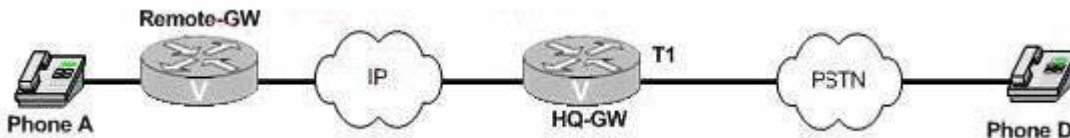
On which of the following does the maximum device weight capacity a Cisco MCS server depend? (Choose three.)

- A. The quantity and the type of phones configured on the Cisco MCS server.
- B. CCM software release version.
- C. The amount of memory, CPU and I/O throughput.
- D. The server model and type.

Answer: B, C, D

QUESTION 18

You are the network administrator at Itexamworld . The Itexamworld WAN is shown in the following exhibit:



The remote Itexamworld user at Analog Phone A tries to make a call to Analog Phone D. The call is rejected. You troubleshoot the problem and discover that the ISDN Plan and Type that the PSTN was receiving was not setup correctly. The PSTN was expecting the following:

Plan: Unknown

Type: Unknown

While the PSTN was receiving the following:

Plan:ISDN

Type: Unknown

Which methods will resolve this problem?

- A. Use the isdn map command on the POST dialpeer on Remote-GW.
- B. Use the isdn map command on the VOIP dialpeer on HQ-GW.
- C. Use the isdn map command on the POTS dialpeer on HQ-GW.
- D. Implement an outgoing translation rule on the VOIP dialpeer on HQ-GW.
- E. Use the isdn map command on the VOIP dialpeer on Remote-GW.

Answer: E

Explanation:

The isdn map command is used to override the default ISDN type and plan generated by the router which has custom values. To undo the changes you made with the isdn map command use the following command:

```
isdn map {address address |regexp |plan plan |type type}
```

```
no isdn map {address address |regexp |plan plan |type type}
```

Syntax Description

address address	Address map, which can be to the calling, called, or redirecting number.
regexp	Regular expression for pattern matching.
plan plan	ISDN numbering plan.
type type	ISDN number type.

QUESTION 19

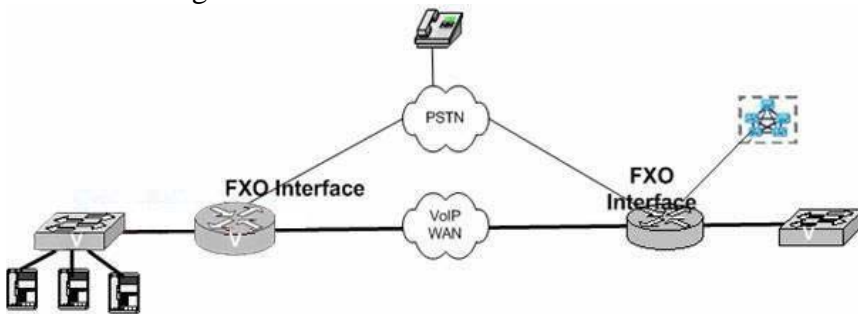
Migrating from TDM voice requirements to VoIP usually does not cause migration issues for customers who expect to be:

- A. Deploying in a Green-Field scenario.
- B. Fully IP in 1 to 3 years.
- C. Fully IP within 12 months.
- D. All of the above.

Answer: A

QUESTION 20

You are the network administrator at Itexamworld . The Itexamworld network is shown in the following exhibit:



You want to implement Caller ID for calls from PSTN to the IP Phones. Analog trunks are equipped to the PSTN from both the GWs. The PSTN CO switch is capable of delivering Caller ID on the connection to the Cisco voice GW. The Cisco voice gateway is using a VIC-2FXO-M1 card.

What would be the correct voice GW design?

- A. None. Caller ID is not supported on analog FXO.
- B. GW connected via SCCP to the CallManager.
- C. GW must be a 2600/3600/3700 series platform.
- D. GW connected via MGCP to the CallManager.
- E. GW connected via H.323 to the CallManager.

Answer: E
